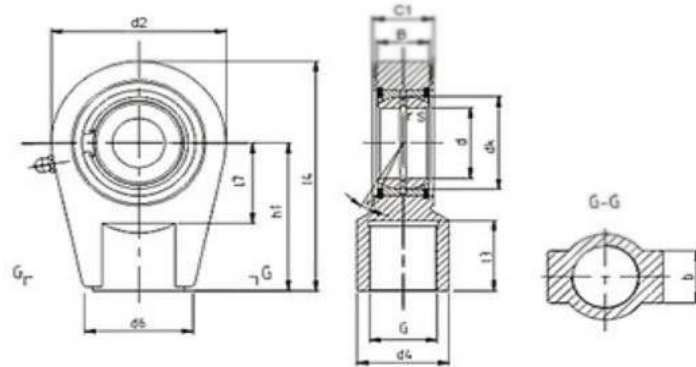


TAPR-N SERIES THREADED HYDRAULIC ROD ENDS STEEL/STEEL WITH RELUBRICATABLE BEARING



Part Number	Dimensions(mm)												Basic Load Ratings (KN)		a° angle	Weight (kg)
	d	B	dk	C1	d2	G-6H	h1	l3	l4	d4	d6	b	Cr	Cor		
TAPR20N	20	16	29	19	56	M16*1.5	50	17	80	25	46	20	30	81	9	0.44
TAPR25N	25	20	35.5	23	56	M16*1.5	50	17	80	25	46	21	48	72	7	0.47
TAPR30N	30	22	40.7	28	64	M22*1.5	60	23	94	32	50	26	62	106	6	0.7
TAPR35N	35	25	47	30	78	M28*1.5	70	29	112	40	66	28	79	153	6	1.2
TAPR40N	40	28	53	35	94	M35*1.5	85	36	135	49	76	33	99	250	7	2.1
TAPR50N	50	35	66	40	116	M45*1.5	105	45	168	61	90	37	156	365	6	3.74
TAPR60N	60	44	80	50	130	M58*1.5	130	59	200	75	120	46	245	400	6	6.49
TAPR70N	70	49	92	55	154	M65*1.5	150	66	232	86	130	51	313	540	6	9.88
TAPR80N	80	55	105	60	176	M80*2.0	170	81	265	105	160	55	400	670	6	14.2

Bearing: GE-ES Series - Hardened and Phosphated, sliding surface treated with MoS₂. Requires Lubrication.

Casting Body: Nodular Cast Iron